

CABINETS				
Dimensions	Order symbol			
External Dimensions (mm)	Grey cover 3-bit lock	Grey cover Swing handle	Window cover 3-bit lock	Window cover Swing handle
300x200x150	ARCA 302015	ARCA 302015S	ARCA 302015W	ARCA 302015WS
400x300x150	ARCA 403015	ARCA 403015S	ARCA 403015W	ARCA 403015WS
400x300x210	ARCA 403021	ARCA 403021S	ARCA 403021W	ARCA 403021WS
500x400x210	ARCA 504021	ARCA 504021S	ARCA 504021W	ARCA 504021WS
600x400x210	ARCA 604021	ARCA 604021S	ARCA 604021W	ARCA 604021WS
700x500x300	ARCA 705030	ARCA 705030S	ARCA 705030W	ARCA 705030WS
800x600x300	ARCA 806030	ARCA 806030S	ARCA 806030W	ARCA 806030WS
Flange versions are available with order symbol 'F' at the end of the order symbols above. "e.g. ARCA 302015F, ARCA 302015SF"				
200x300x150	ARCA 203015	ARCA 203015S	ARCA 203015W	ARCA 203015WS
300x400x150	ARCA 304015	ARCA 304015S	ARCA 304015W	ARCA 304015WS
300x400x210	ARCA 304021	ARCA 304021S	ARCA 304021W	ARCA 304021WS
400x500x210	ARCA 405021	ARCA 405021S	ARCA 405021W	ARCA 405021WS
400x600x210	ARCA 406021	ARCA 406021S	ARCA 406021W	ARCA 406021WS
500x700x300	ARCA 507030	ARCA 507030S	ARCA 507030W	ARCA 507030WS
600x800x300	ARCA 608030	ARCA 608030S	ARCA 608030W	ARCA 608030WS

ACCESSORIES	
Mounting plates, Galvanized steel (2 mm thick) as standard, Pertinax (5 mm thick) and perforated galvanized steel (2 mm thick) only on request	DIN-rail frame set, 4 corner adjustment brackets, 2 metal bars, 2 DIN rails, front plate
Corner adjustment set, 4 corner adjustment brackets, 4 corner brackets	Wall mounting lugs set, 4 lugs and 4 fastening screws
Support bar set for DIN-rail, 4 corner adjustment brackets, 4 corner brackets clips, 2 metal bars for 300mm	Locking Options: complete double bit lock, locking inserts, half cylinder locking
Pole mounting set, 2 Vertical bars, connection clips and 2 adjustable metal strap	Inner door set, galvanized steel
Rain/Snow hood	

ARCA TECHNICAL INFORMATION	
PROPERTY	PC
Material	Glass fibre reinforced polycarbonate
Ingress Protection (EN 60529)	IP 66
Impact Resistance (EN 62262)	IK 10 +35° C/ IK 08 -25 ° C
Temperature Range Celsius (continuous)	-40° ... +80°C
Fahrenheit	-40° ... +175°F
Temperature Range Celsius (short term)	-40° ... +120°C
Fahrenheit	-40° ... +245°F
Electrical Insulation	Totally Insulated <input checked="" type="checkbox"/>
Light Grey Parts Colour	RAL 7035 (Industry grey)
Glow Wire Test (IEC 695-2-1)	960°
Non-toxicity	Halogen Free (DIN/VDE 0472, Part 815)
Flammability rating (material)	UL 94-5VA
UV resistance	UL 508; 720 hours in "Weatherometer"
Gasket	PUR
Chemical Resistance	Good
CONFORMITY TO STANDARDS	EN/IEC 62208, EN/IEC 61439-1-4
	RoHS directive 2011/65/EU
	Low Voltage Directive 2006/95/EC (up to 1500 VCD)
Data subject to change without notice.	

www.fibox.com

Fibox Oy Ab
Keilaranta 19 D
FI-02150 Espoo
Finland

Tel. +358 (0)207 785 700
Fax +358 (0)207 857 702
E-mail: info@fibox.fi
Homepage: www.fibox.com

Fibox Ltd
Suite 25, Durham Tees Valley
Business Centre
Primrose Hill Industrial Estate
Orde Wingate Way
Stockton on Tees TS19 0GD
England

Tel. +44 (0)1642 604 400
Fax +44 (0)1642 604 600
E-mail: projects@fibox.co.uk
Homepage: www.fibox.co.uk

NEW

High performance polycarbonate cabinet



Protection in demanding environments

IP 66

+80 °C

-40 °C



Fibox ARCA non corrosive electrical cabinets for use in extremely harsh and demanding environments

High grade polycarbonate construction

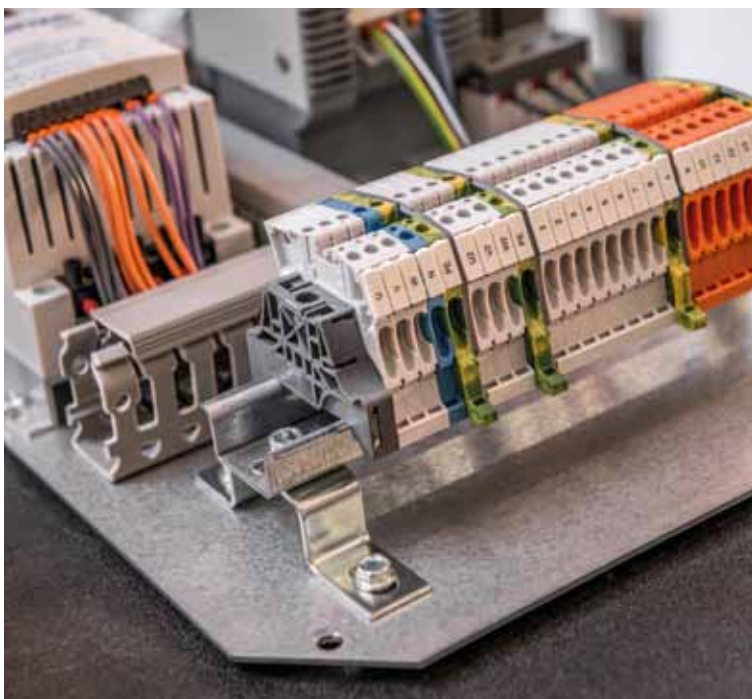
- Non corrosive for use in extremely harsh and demanding environments offering a long-lifetime and excellent security
- Easy to customise, on the workbench or on site, no complicated tools needed, no rust on the worked surface afterwards
- Aesthetically sound for an indefinite time after installation
- Lightweight for ease of transport and installation
- Low Voltage Directive 2006/95/EC up to 1500 VDC
- Wide operating temperature
- UV stabilized polycarbonate ensuring high performance in outdoor installations
- Chemical resistant
- Raw material flammability rating UL 94-5VA

Robust design

- IP 66 ingress protection for peace of mind in wet and dusty environments
- High impact resistance. Able to withstand contact up to IK 10
- Excellent protection against vandalism
- Patent pending strong hinge design to withstand regular door opening to 120° and the fitting of door mounted components
- Multiple locking options to offer a secure solution for every application

Innovative features

- Patent pending lockable inner door – no tools required for mounting
- Patent pending easy to use DIN-rail frame set design - no special tools required - easy and quick mounting
- Mounting pods on the base, cover and four base sides
- Variable depth option for internal plates
- A multitude of accessories available



Door

- Door opening angle 120°
- Both horizontal and vertical option
- Pre-formed fixing studs inside
- Easy access to the contents
- Door stop available



Patent pending hinge design

- Easy assembly and refined appearance



Declined design on base

- Better waterproof

Locking

- Double-bit
- Changeable lock inserts



Mounting pods

- On the base, cover and four base sides



Gasket

- Wide and secured gasket with PUR material for high quality sealing.



Special molded rib design

- For making the cabinet extra stabile and solid

Corner design

- Double corner to secure fixing without destroying the IP
- Robust and rigid cabinet



Base

The main body of the Fibox ARCA cabinet is made from rugged polycarbonate which offers many benefits;

- Non corrosive
- High impact resistance
- Low maintenance
- UV resistant
- Aesthetically pleasing

DIN rail frame set *

- Including DIN rail frame, front plate, corner brackets and screws for installation
- Easy and quick installation
- Patent pending



Adjustable mounting plate *

- Easy to assemble the mounting plate to desired depth with special corner brackets.



Mounting plate

- Galvanized steel as standard
- Pertinax and perforated galvanized steel on request



Inner door *

- No tools needed for installation
- Lockable
- Patent pending



Window cover *



Wall mounting lugs *

- 2 depths (10 and 40 mm) in stainless 316 steel

Swing handle *

- Secure 3-point closing with swing handle
- Changeable lock inserts

Flanges *

- Membrane, thread and smooth flange plates
- Multiple cable entry features

Door guide *

- Secure closing for bigger cabinet sizes



*Accessory. Sold separately.